

Solar Hybrid Inverter

FSI Series

Features:

Stable & Durable

- latest toroidal transformer could handle triple surge power.
- Inbuilt AVR stabilizer for stable output

High efficiency

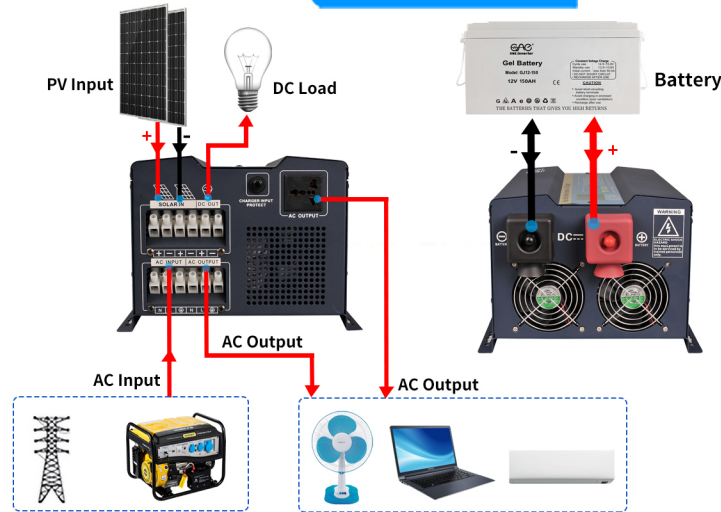
- Inverter transfer efficiency up to 85%
- Inbuilt MPPT efficiency more than 99%

Charger

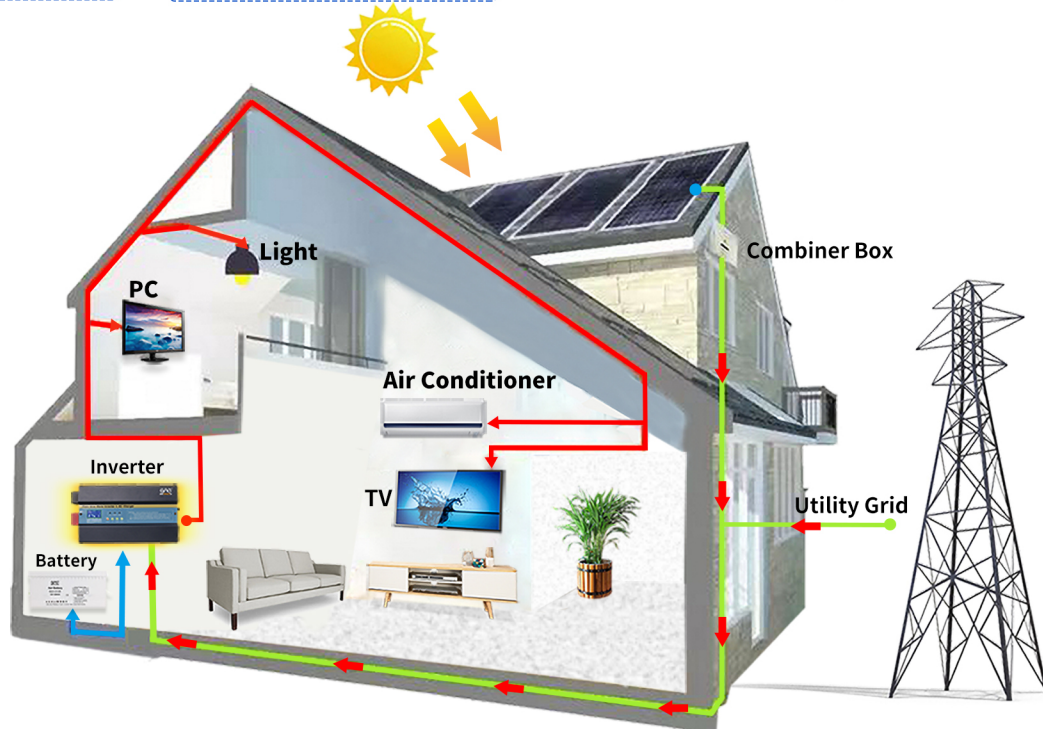
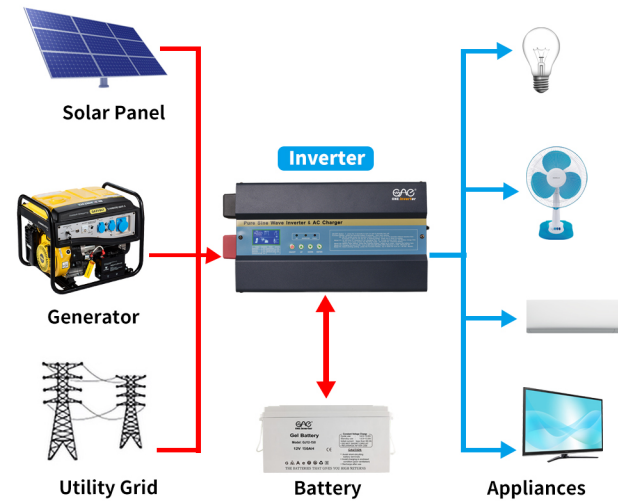
- Inbuilt 35A AC charger
- Inbuilt 30A/60A MPPT solar charger



Connection



Diagram



3D Visual

Solar Hybrid Inverter

Model	FSI-152	FSI-202	FSI-302	FSI-402	FSI-502	FSI-602
Rated power	1.5KW	2KW	3KW	4KW	5KW	6KW
Surge power	4.5KW	6KW	9KW	12KW	15KW	18KW

AC Input & Output

Voltage	220VAC
Selectable Voltage Range	165-275VAC (220VAC)
Frequency Range	50Hz/60Hz automatic recognition
AC Voltage Regulation	(DC Batt.mode)220vac±3%
Transfer Time	≤4ms
Wave Form	Pure Sine Wave
Transformer type	Toroidal
Transfer efficiency	≥85%

Battery

Battery Voltage	12V/24V/48V	24V/48V
Type	Gel/SLA/AGM/ Lithium battery	
DC Charge Voltage	13.6-14.2VDC(12V)/27.2-28.4VDC(24V)/54.4-56.8VDC(48V)	
Overcharge Protection	Battery voltage ≥16VDC (12V) ≥32VDC (24V) ≥64VDC (48V), stop charging after 60s alarm	

Solar Charger & AC Charger

Type	MPPT Solar Charger Controller		
Maximum PV Array Working Circuit Voltage	150VDC		
Maximum PV Array Power	30A: 420W(12V)/840W(24V)/1650W(48V) 60A : 900W(12V)/1700W(24V)/3400W(48V)	30A: 840W(24V)/1650W(48V) 60A : 1700W(24V)/3400W(48V)	60A:1700W(24V)/3400W(48V)
Maximum AC Charge Current	35A (adjustable)		
Maximum Solar Charge Current	30/60A MPPT (OPTIONAL)		60A MPPT
Maximum Charging Current	65A/95A		95A

Working mode

01 mode	AC mains priority
02 mode	ECO mode
03 mode	DC battery priority

Packing Details

Dimension, D*W*H(MM)	530*335*260			740*355*275		
G.W.(KGS)	18	20	22	33	35	36

Environment

Humidity	0-95% (NO CONDESNATION)
Operating Temperature	0-60°C
Storage Temperature	0-60°C

*Product Specifications Are Subject To Change Without Further Notice